

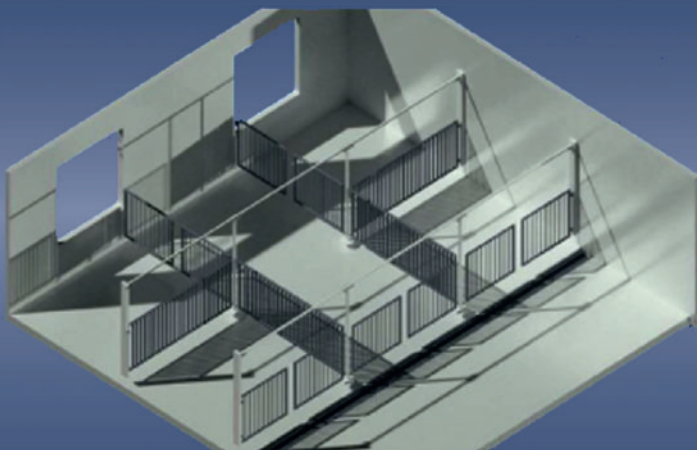
*System solutions  
and concepts  
are created here!*

**Husbandry solutions for  
your large animal facility**

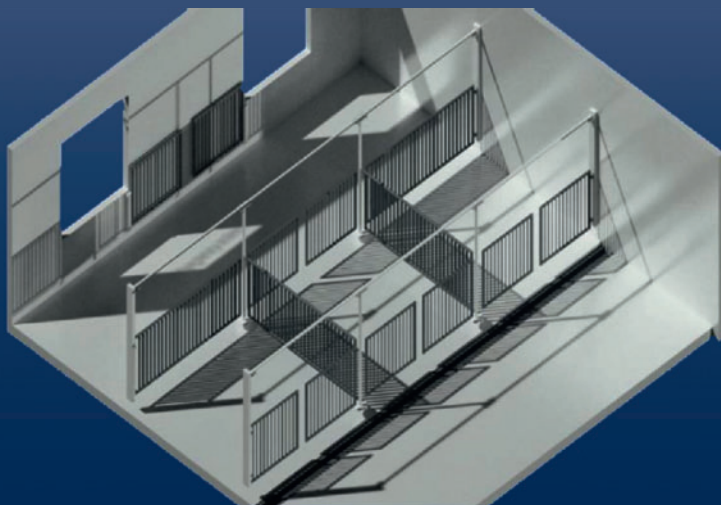
**Quality: Made in Germany**

**LAMMERS**

... the aim of your expectations



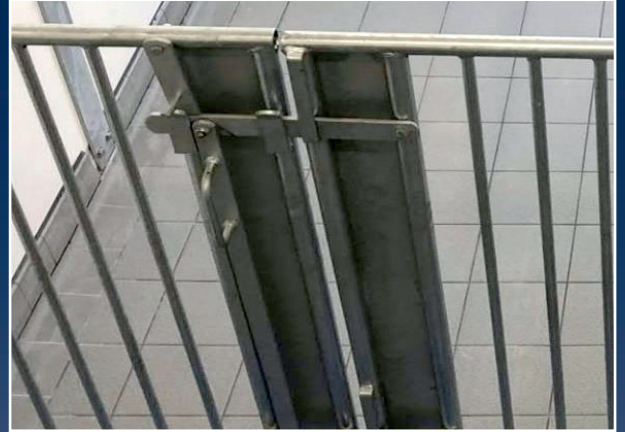
**Enclosure systems  
for different species**



**Your Partner for animal welfare solution**  
**[www.lammers-gmbh.de](http://www.lammers-gmbh.de)**

# LAMMERS

... the aim of your expectations



- One hand door lock with double lock
- Farrowing pens made of steel (V4A) with extra coating (glasblasted)
- Hygienic surfaces
- Enclosure systems made of different qualities up to V4A stainless steel possible
- All materials are resistant to disinfectants and can also be autoclaved if required
- Especially suitable for scientific animal husbandry



Your Partner for animal welfare solution  
[www.lammers-gmbh.de](http://www.lammers-gmbh.de)

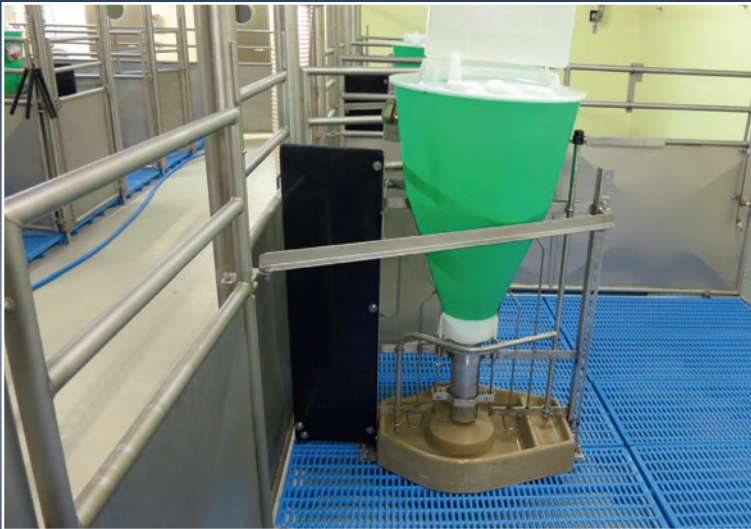


# LAMMERS

... the aim of your expectations



- Large animal pens
- Made of steel (V4A) with extra coating (glasblasted)
- Hygienic surfaces



- Enclosure systems made of different qualities up to V4A stainless steel possible
- Fatten and weaner pens
- All materials are resistant to disinfectants and can also be autoclaved if required



- Especially suitable for scientific animal husbandry
- Different wireframe strengths

**Your Partner for animal welfare solution**  
**[www.lammers-gmbh.de](http://www.lammers-gmbh.de)**

# LAMMERS

... the aim of your expectations

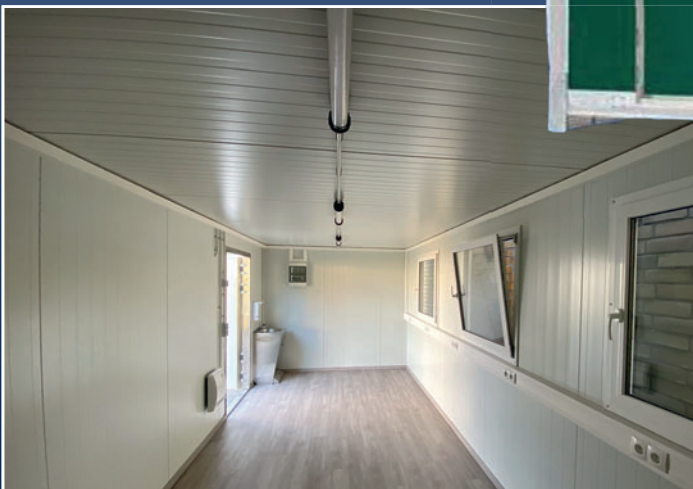
## Transportable labor container

Your project needs a quick and uncomplicated expansion of large animal space?

You don't have the right building in place?

We have the right solution:

Flexible facility



The transportable container-solution to set up animal facility and lab space in a pragmatic manner.

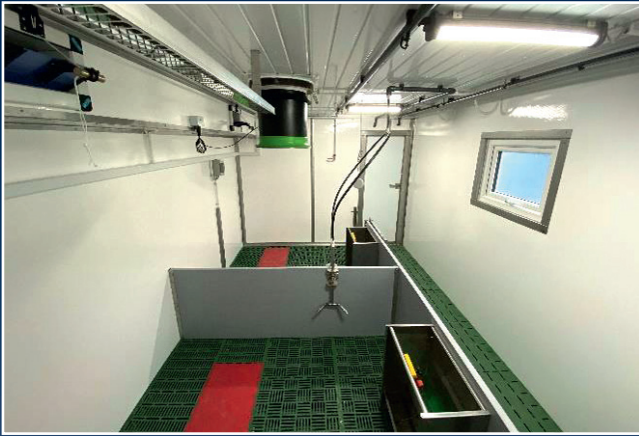
Your Partner for animal welfare solution  
[www.lammers-gmbh.de](http://www.lammers-gmbh.de)



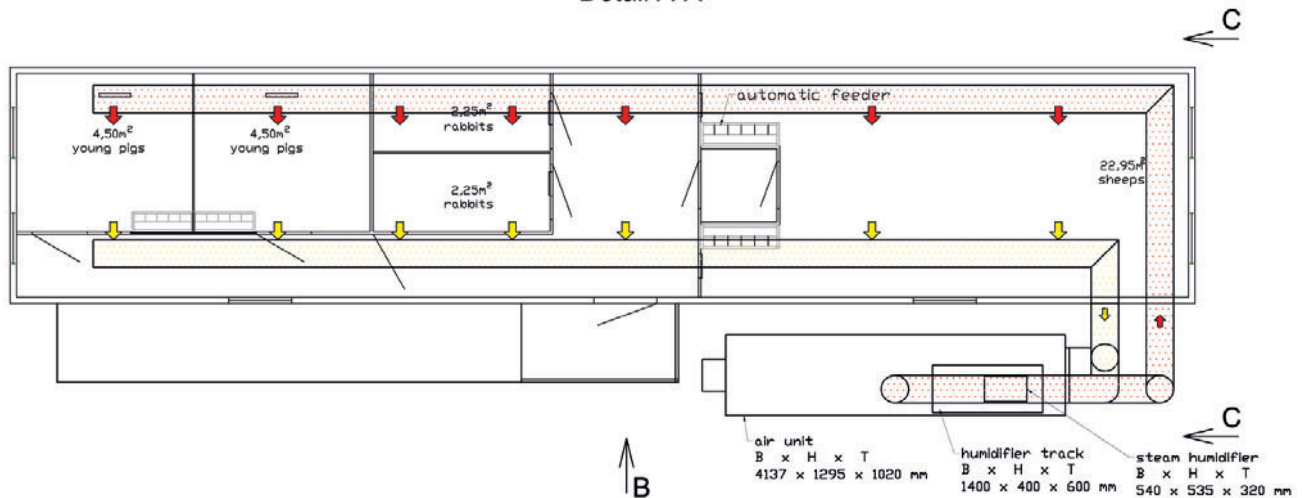
# LAMMERS

... the aim of your expectations

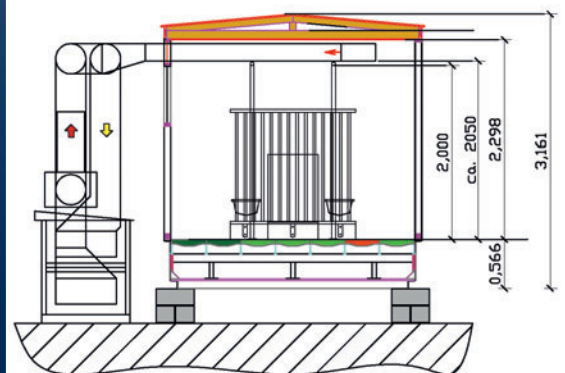
## Transportable animal container



Detail A-A



Detail C-C



Your Partner for animal welfare solution  
[www.lammers-gmbh.de](http://www.lammers-gmbh.de)

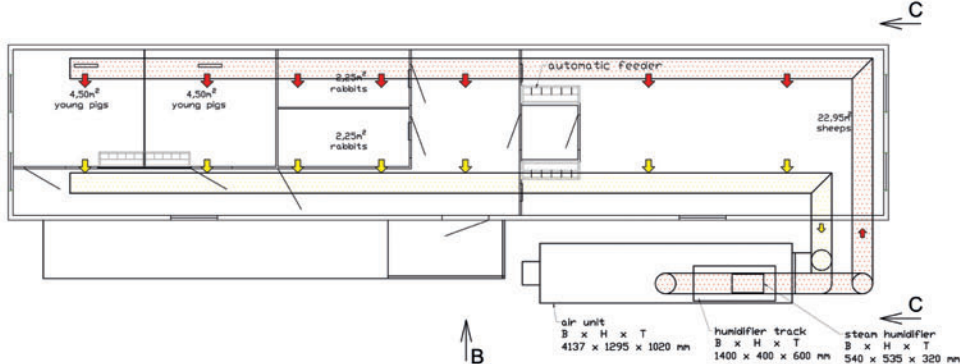
# LAMMERS

... the aim of your expectations

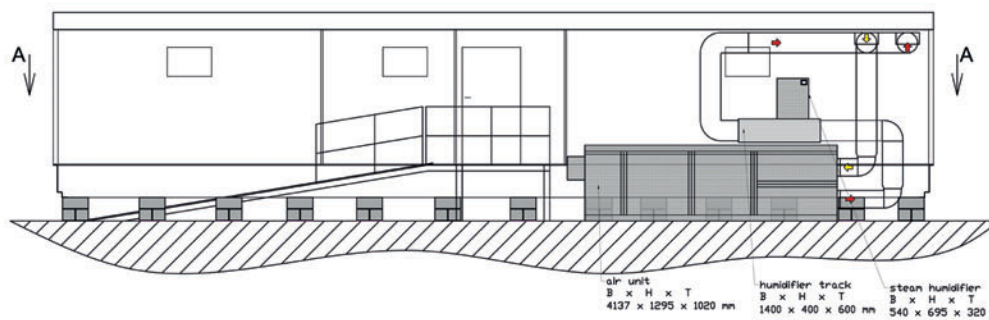
## Transportable animal container



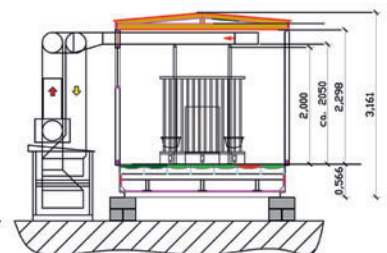
Detail A-A



Detail B



Detail C-C



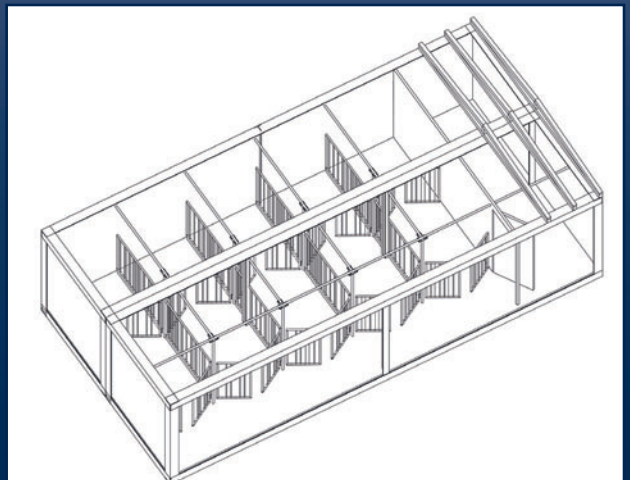
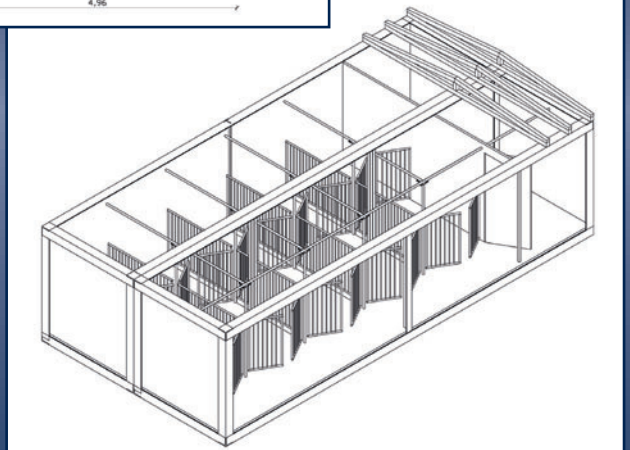
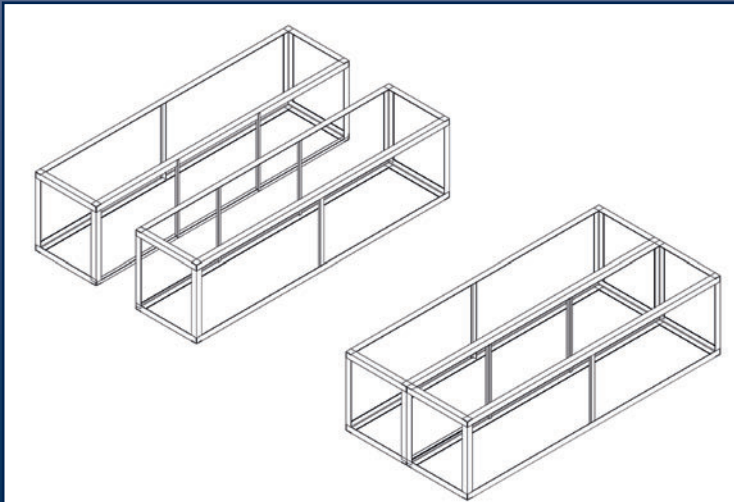
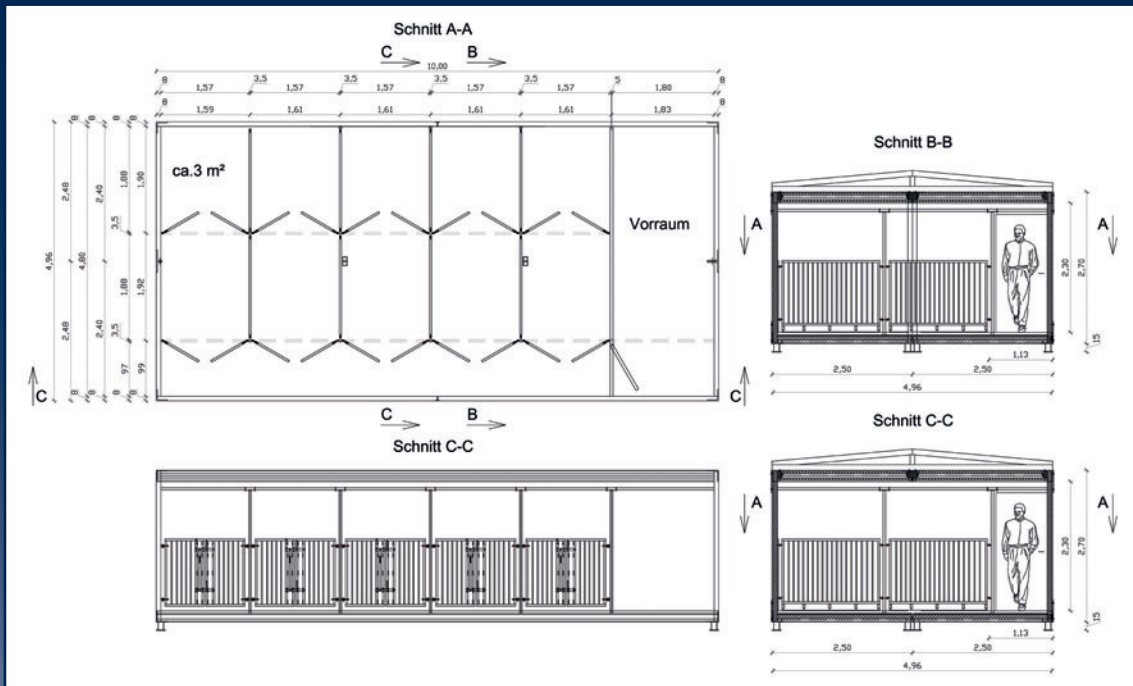
Your Partner for animal welfare solution  
[www.lammers-gmbh.de](http://www.lammers-gmbh.de)



# LAMMERS

... the aim of your expectations

## Planning examples

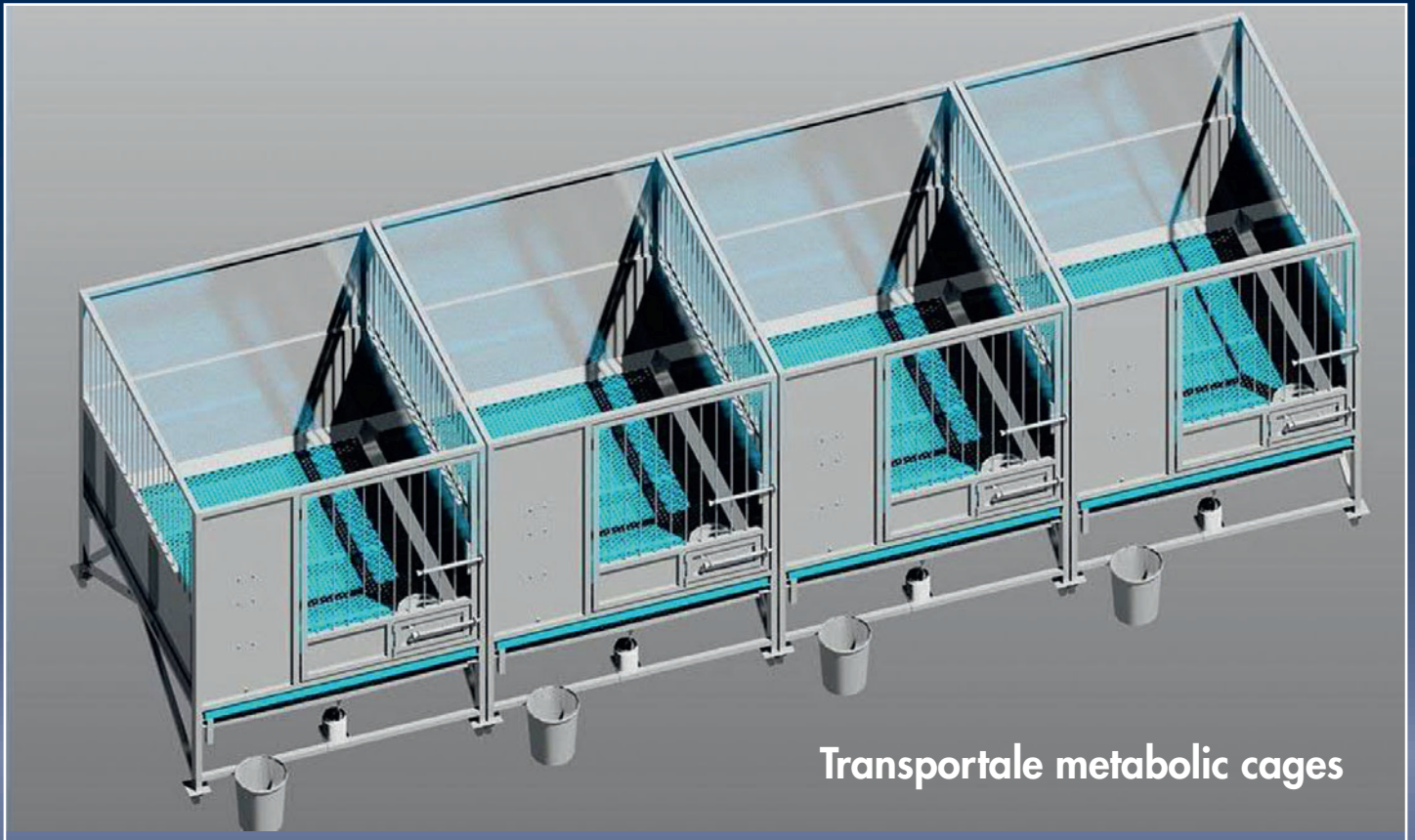


Your Partner for animal welfare solution  
[www.lammers-gmbh.de](http://www.lammers-gmbh.de)

# LAMMERS

... the aim of your expectations

## Metabolic cages



Metabolic cages  
for pigs

Stainless steel with  
different surfaces



Your Partner for animal welfare solution  
[www.lammers-gmbh.de](http://www.lammers-gmbh.de)



# LAMMERS

... the aim of your expectations

## Enclosure systems – accessory parts



Feeder an troughs in stainless steel



- Bow drinkers without circulation in stainless steel
- different nipples available
- also available with dump function
- available for different species of animals (pigs, horses, cows, sheeps dogs, small animals)

## Available for different species of animals



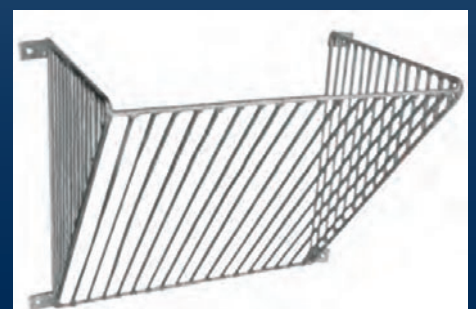
Basket



Pipeholder



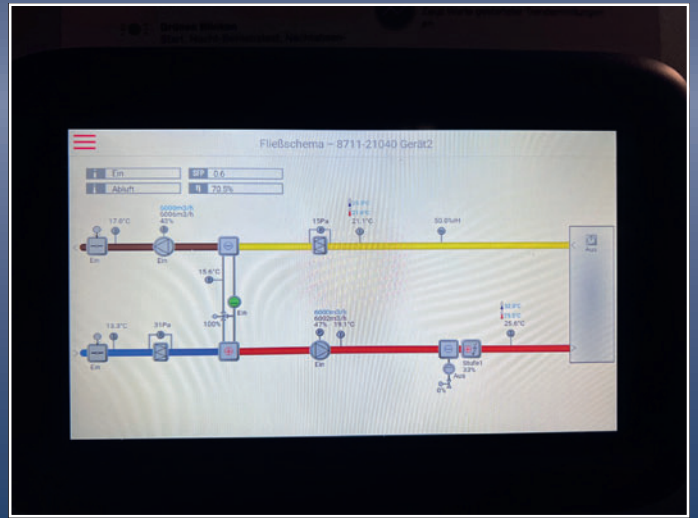
Straw rack



Straw rack

**Your Partner for animal welfare solution**  
**[www.lammers-gmbh.de](http://www.lammers-gmbh.de)**

## A photograph of a large industrial facility, likely a power plant or refinery. In the foreground, a white control panel with orange hoses is mounted on a metal structure. The panel has a digital display and various buttons. Below the panel, there are several large, cylindrical storage tanks or vessels. The background shows a complex network of pipes, valves, and large storage tanks. The facility is housed in a large, industrial building with a high ceiling and a concrete floor.



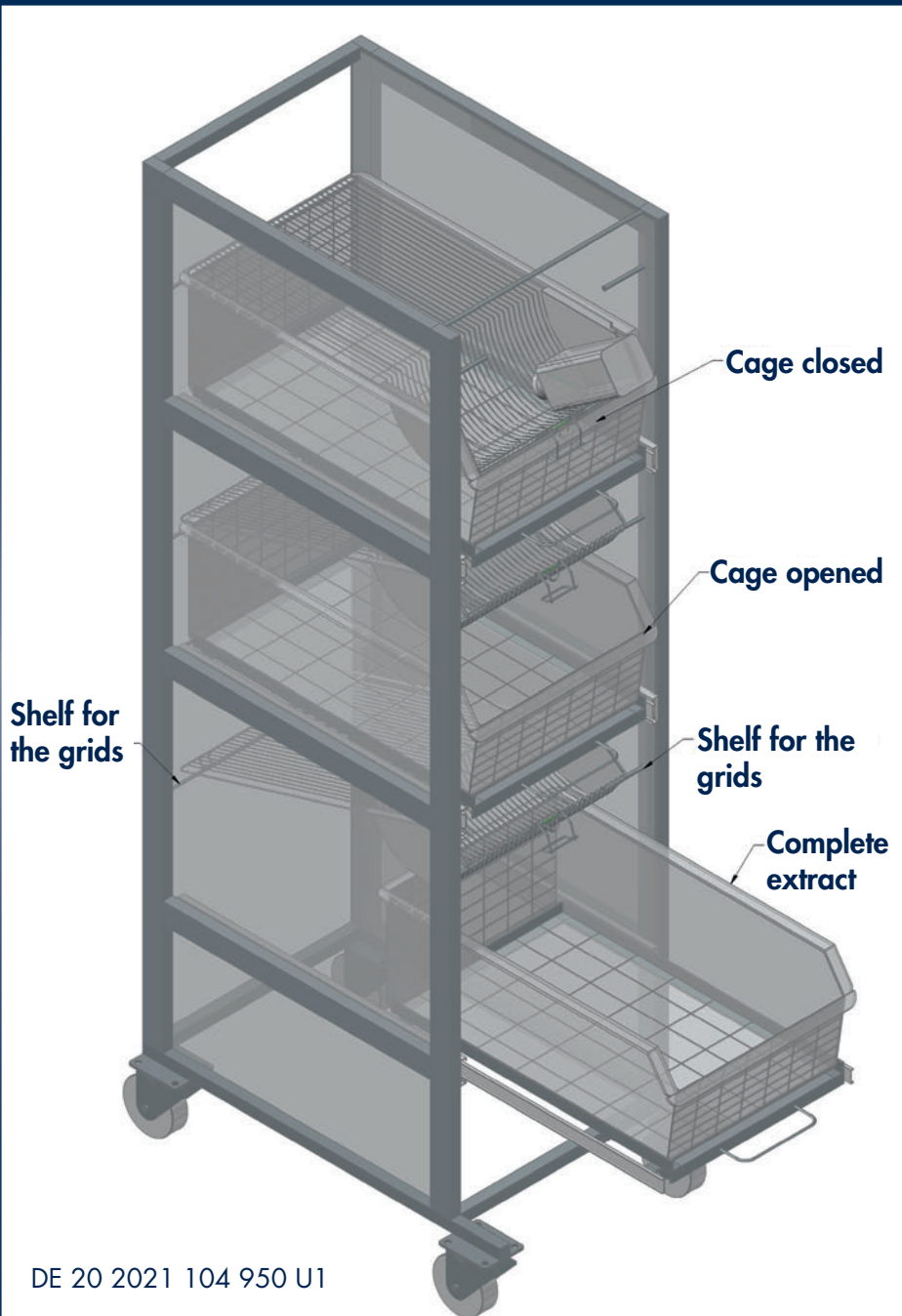
- with superheated steam spray
- fully air conditioned

- with remote monitoring
- can be set up indoors or outdoors

**Your Partner for animal welfare solution**  
**[www.lammers-gmbh.de](http://www.lammers-gmbh.de)**

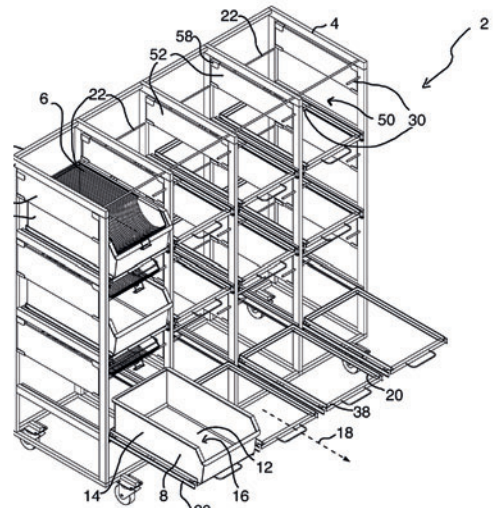


## Utility model for rodent cage



### Rodent cage with pull-out cage boxes

- relief for employees
- back-friendly work
- easier controll options by pulling out the cage boxes with or without a grid cover





You have questions or special requests?  
Then please contact us.

# LAMMERS

... the aim of your expectation

**Lammers Systemtechnik GmbH & Co. KG**

**Hauptstraße 33 • 26901 Rastdorf**

**Tel. 05956 92000 • Fax 05956 920040**

**[www.lammers-gmbh.de](http://www.lammers-gmbh.de)**

**[info@lammers-gmbh.de](mailto:info@lammers-gmbh.de)**